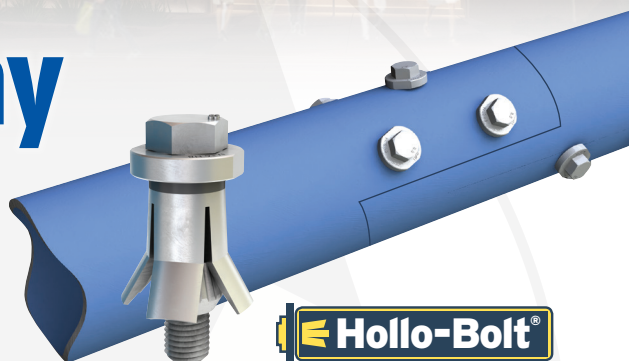


The fastest way to make SHS connections



Project: Wilshire Grand Center, Los Angeles, USA

Hollo-Bolts allowed the Structural Hollow Section (SHS) frame to be assembled faster than conventional bolting and removed any requirement for unsightly plates at the joints. Welding was not necessary due to the high strength connection achieved by using Hollo-Bolts, which also reduced labour costs.

- ✓ Cost-saving structural connections
- ✓ High resistance to shear and tensile loading
- ✓ CE Mark, DIBt, TÜV & ICC-ES seismic approvals
- ✓ Simple installation using standard hand tools
- ✓ Unique high clamping force design



Contact Pretec and save time and money on your next project...

Norge: +47 69 10 24 60
Sverige: +46 303 24 30 80



post@pretec.no
info@pretec.se



www.pretec.no
www.pretec.se