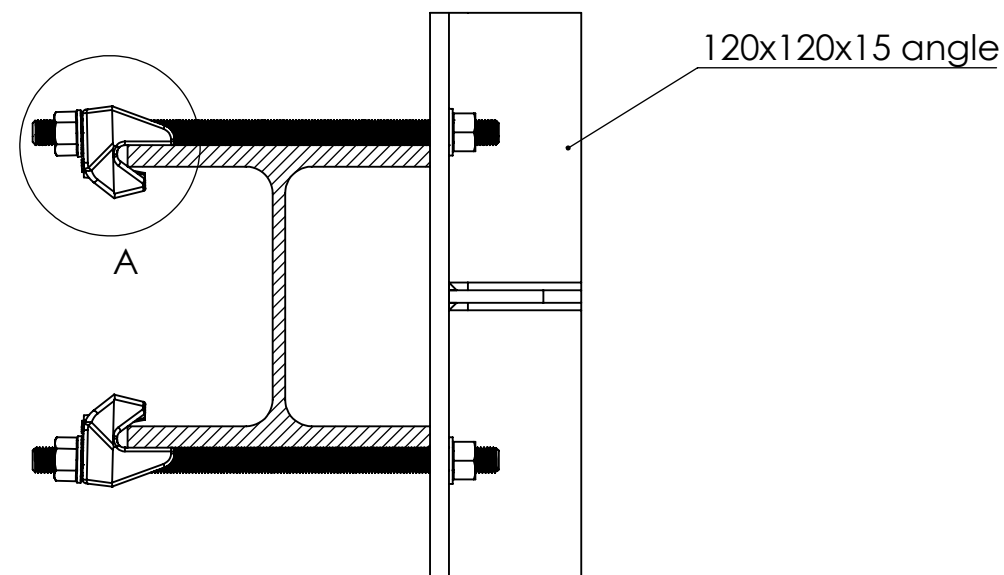
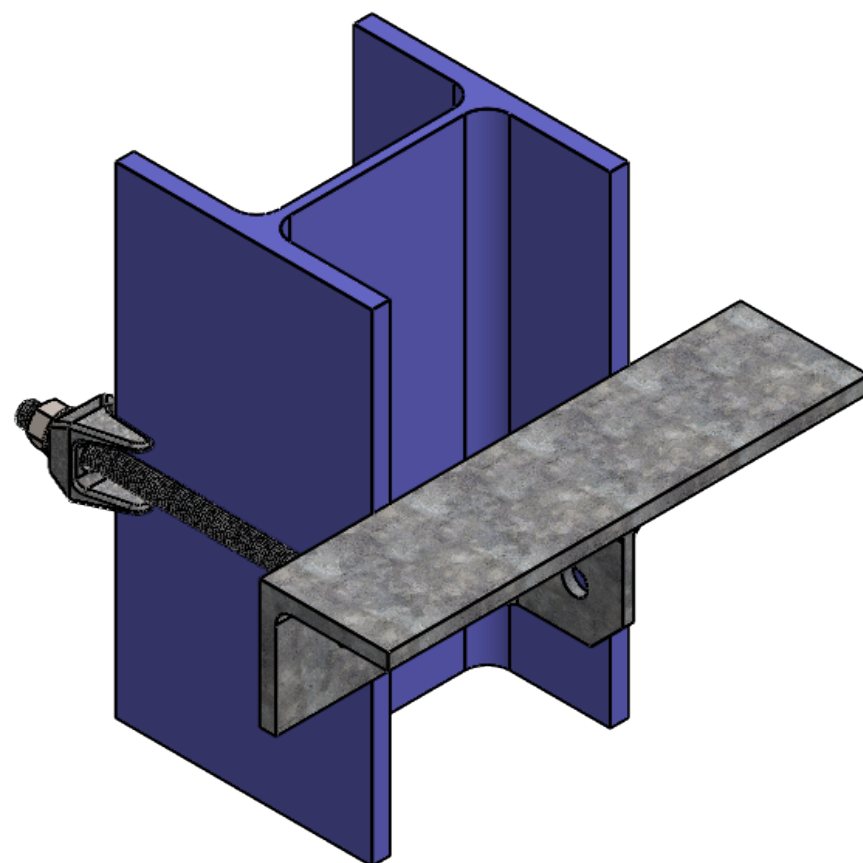
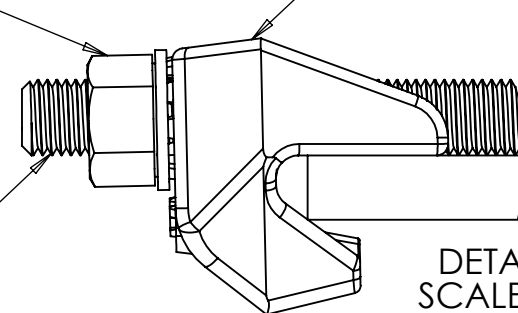


M20 Nut Property Class 8/10
with M20 Plain Washer DIN
125-1A

CF20 Clamp
Suitable for 10-19mm

M20x400 Property Class 8.8
Threaded Rod



- GENERAL NOTES:
- DO NOT SCALE THIS DRAWING
 - THIS DRAWING AND THE COPYRIGHT THEREIN ARE THE PROPERTY OF LINDAPTER INTERNATIONAL. IT IS ISSUED ON THE CONDITION THAT IT MUST NOT BE USED, COPIED, DISTRIBUTED OR EXHIBITED WITHOUT WRITTEN PERMISSION AND CONSENT. THE DRAWING MUST ALSO NOT BE USED FOR ANY OTHER PURPOSE THAN WHICH IT IS ISSUED. IT IS THE RESPONSIBILITY OF THE ENGINEER TO PERFORM ALL REASONABLE CHECKS ON THE SUPPORTING AND SUPPORTED MEMBERS. THAT IS LOCAL TO THE CONNECTION AND THE LINDAPTER COMPONENTS, BOTH FOR THE LOAD APPLIED AND THE CLAMPING FORCE GENERATED FROM THE TIGHTENING OF THE FASTENERS. WHERE NECESSARY WORKMANSHIP FOR ITEMS SHOWN ON THIS DRAWING SHOULD COMPLY WITH THE RELEVANT SECTIONS OF THE NATIONAL STRUCTURAL STEELWORK SPECIFICATION (NSSS) FOR BUILDING CONSTRUCTION 5TH EDITION CE MARKING VERSION.
 - IF FELT NECESSARY, WHERE EXCESSIVE VIBRATION MAY BE A CONCERN, IT IS ACCEPTABLE FOR CERTAIN TYPES OF ANTI-VIBRATION LOCKING DEVICES SUCH AS, BUT NOT LIMITED TO, PROPRIETARY WASHERS AND NUTS TO BE USED WITH LINDAPTER COMPONENTS AND/OR ASSEMBLIES; SPRING WASHERS OF ANY TYPE ARE NOT RECOMMENDED. IN THESE SITUATIONS IT IS IMPORTANT THAT THE MANUFACTURER'S INSTALLATION INSTRUCTIONS ARE FOLLOWED. NO GUARANTEES OR WARRANTIES ARE IMPLIED.
 -
 -

- DRAWING NOTES:
- DIMENSIONS ARE IN MM
 - TOLERANCES: ± 1 mm
 - ANGULAR: BEND ± 1 degree
 - MATERIAL COATINGS TO BE SPECIFIED BY THE ENGINEER

Assembly Data:

Static Tensile SWL =	29.4 kN	Factor of Safety :
		5 : 1
Static Slip SWL =	3 kN	Factor of Safety :
		5 : 1
Lindapter Fastener Tightening Torque = (Unlubricated Bolts)	285 Nm	

For combined loadings the current relevant national standard should be taken into consideration

REV.	DESCRIPTION	BY	DATE
------	-------------	----	------

PROJECT **OLE - Norway Rail**

DRAWING TITLE
**CF20 Angle Bracket
for OLE Connection**

lindapter®

www.lindapter.com

CUSTOMER Pretec Norway		ENQUIRY N. GB-09885	
DRAWN I.P.	DATE 12/05/2017	CHECKED A.R.	
SCALE: NOT TO SCALE		WEIGHT:	
DWG. NO. SW11252-IP			REV. 0